

# City Bus Surveillance Solution

## Safety Issues During Operation

**Irregular driving:** over-speeding, rapid acceleration/deceleration, sharp turn and other acts which seriously affect the safety of passengers.

**Unusual event:** open the door while driving; the back door clips passengers; start driving the vehicle before passengers get off, which easily cause accidents.

**Emergencies:** Extreme behavior such as fire explosion on a bus, which needs complete evidence.

**Vehicle breakdown:** vehicle breaks down during the operation, which needs to report immediately in order to avoid accidents.

## Problems During Daily Operation

**Station line:** a variety of complex station announcement line such as annular, U-shaped line which need automatic station announcement.

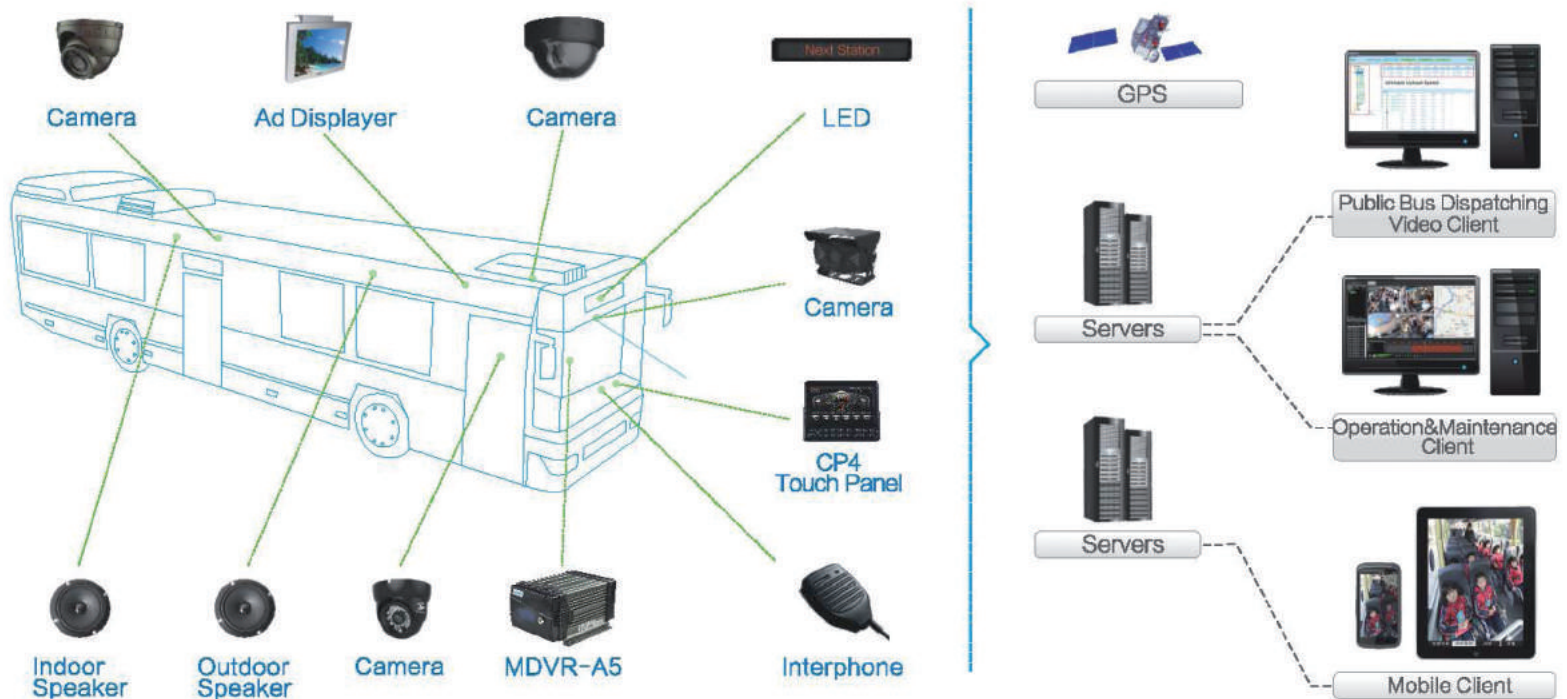
**Device maintenance:** device replacement, maintenance which takes too long time and affect the normal operation of the vehicle.

**Video review:** HD image is needed to get evidence.

**Convenient scheduling:** complex and cumbersome vehicle scheduling is less convenient than one key switch line.

**Scientific scheduling:** scientific analysis technology can make dispatch more reasonable.

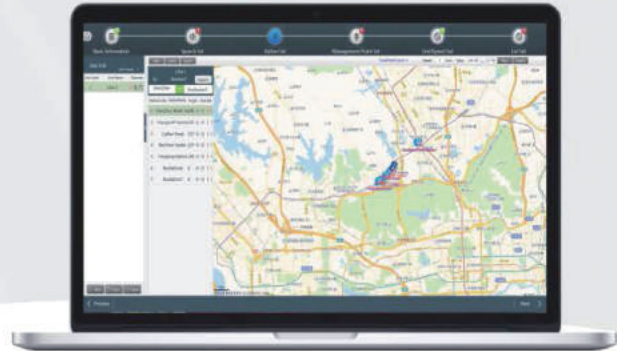
## System Diagram



## Features



- Multiple-Line Station Announcement



- Spot Data Collection



- Public Bus Dispatching Platform

- Bus Lane Enforcement 

